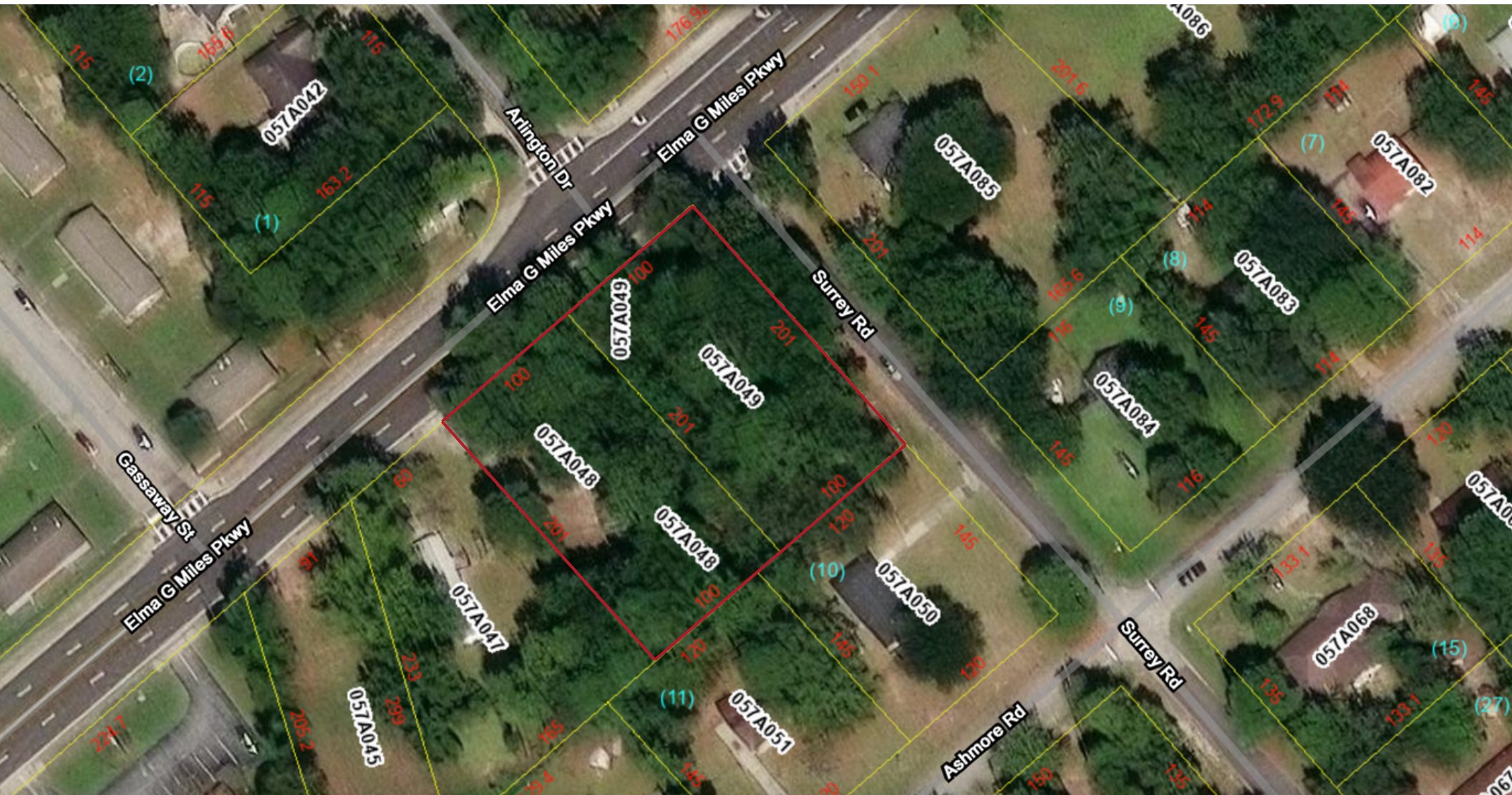


ELMA G MILES PKW | HINESVILLE, GA 31313




ABOUT THE PROPERTY

Prime Development Land in Hinesville: 2 Lots Available

These two combined lots offer 1 acre of development potential in the center of Hinesville. Situated between Veterans Parkway and General Screven Highway, this prime location boasts an estimated 18,000 vehicles passing daily. Currently zoned residential, but has potential to be rezoned and used for commercial use. Discover an exceptional opportunity in the highly sought-after Elma G Miles community in Hinesville.

HIGHLIGHTS

 \$500,000

 2 LOTS TOTALING APPROX 1 ACRE

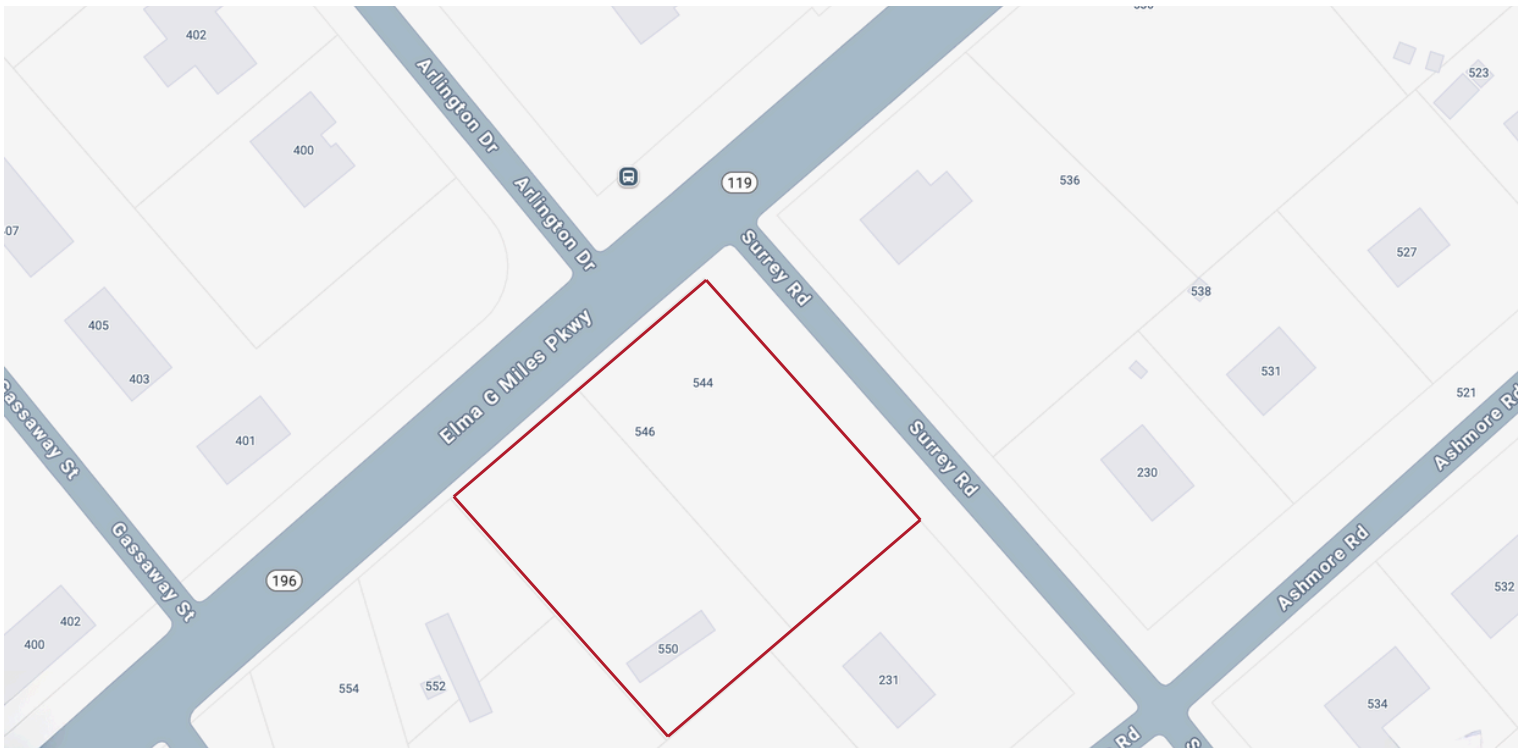
 UNIMPROVED LAND

 DETACHED

 ZONING: R12

 49 MIN TO AIRPORT

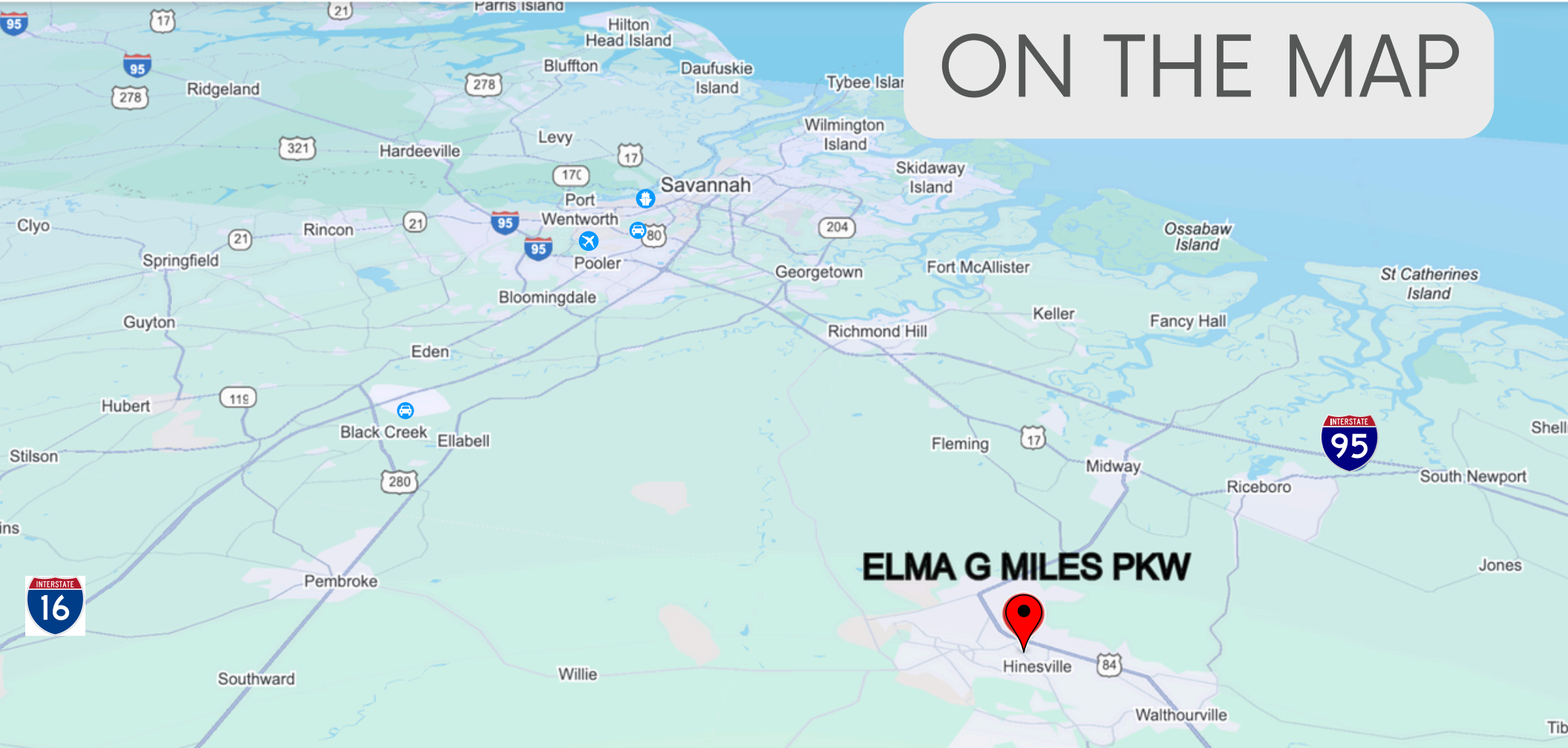
 TOTAL POPULATION:
36,181



SEABOLT
REAL ESTATE


VANTOSH
COMMERCIAL GROUP

ON THE MAP



ELMA G MILES PKW



56 MIN TO GEORGIA PORTS AUTHORITY



59 MIN TO HYUNDAI MOTOR GROUP'S
ELECTRIC VEHICLE PLANT



47 MIN TO AIRPORT



48 MIN TO MITSUBISHI POWER AMERICAS



24 MIN TO 95



57 MIN TO DOWNTOWN SAVANNAH



40 MIN TO I 16



44 MIN TO POOLER

PLEASE INQUIRE

Beth Vantosh

Commercial President



CELL: 912.663.3392



BVANTOSH@VANTOSHCO.COM

****Disclaimer**** This document is provided by Vantosh Commercial Group for informational purposes only and does not constitute professional advice. While we strive to ensure accuracy, we cannot guarantee the completeness or reliability of the information presented. All interested parties should conduct their own due diligence and seek professional advice as needed. Vantosh Commercial Group disclaims all liability for any errors, omissions, or inaccuracies in this document. ©2024 Vantosh Commercial Group. All Rights Reserved.



SEABOLTREALESTATE.COM



OFFICE: 912-233-6609



**24 E. OGLETHORPE AVENUE
SAVANNAH, GA 31401**

SEABOLT
REAL ESTATE


VANTOSH
COMMERCIAL GROUP