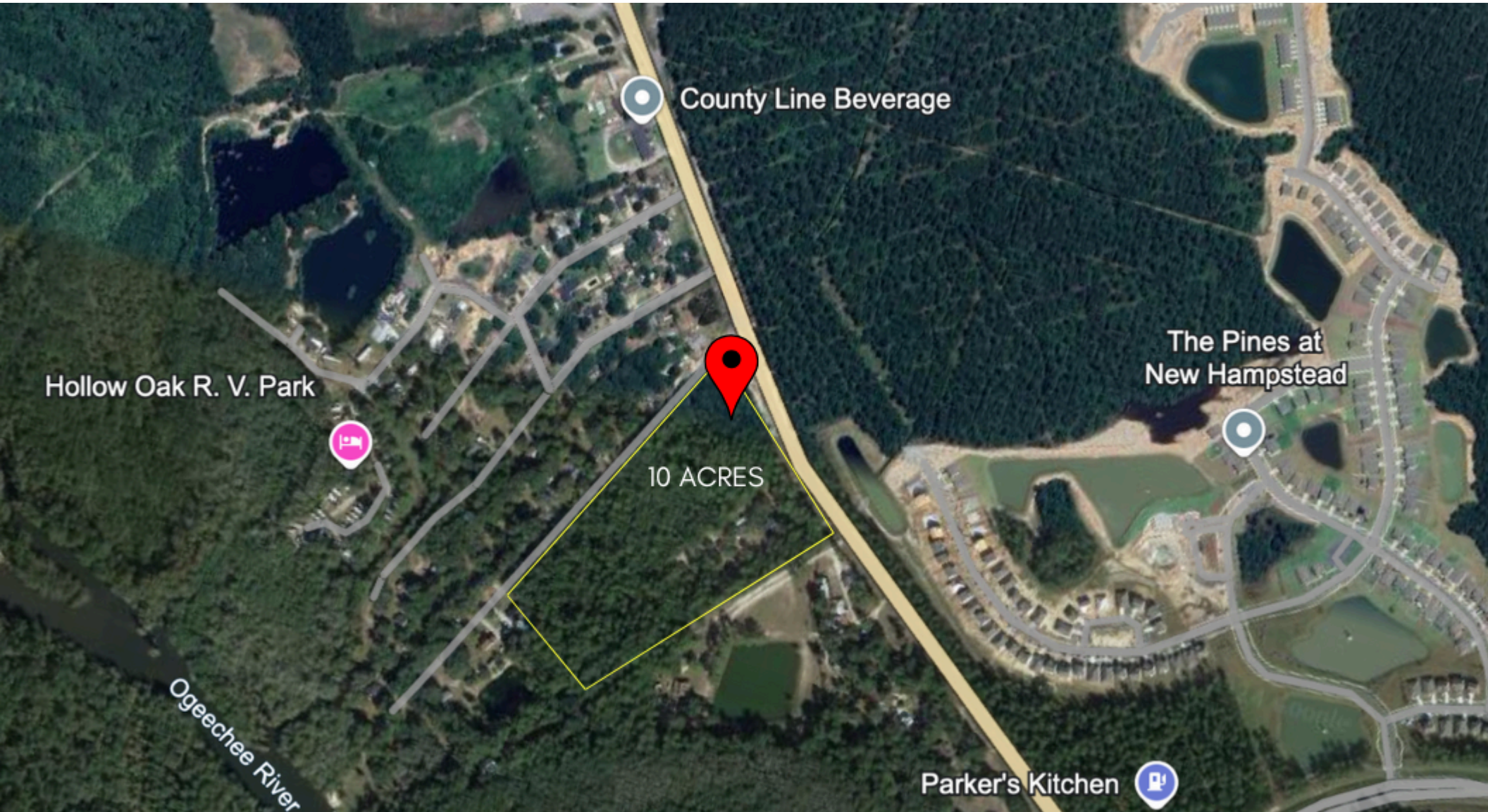


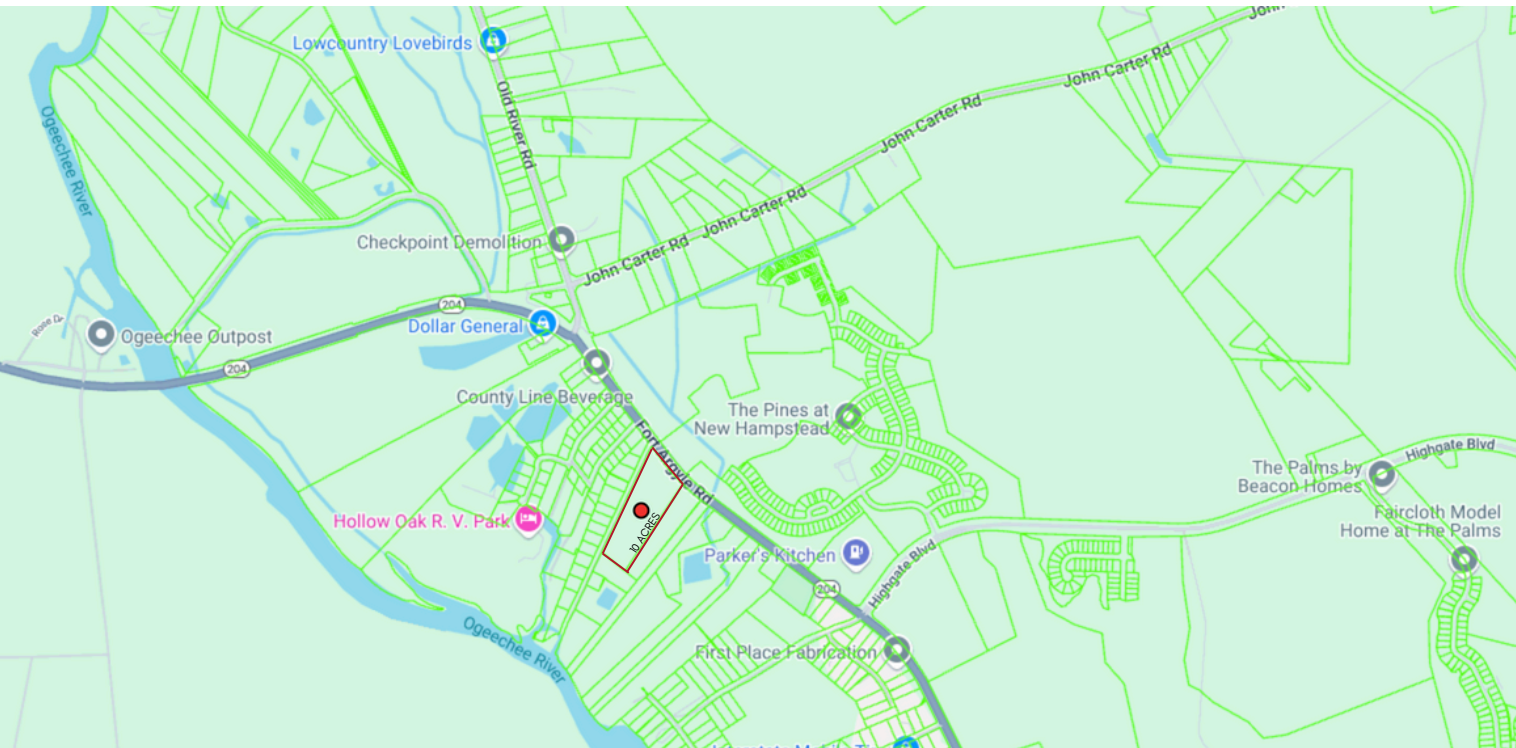
COX LN | SAVANNAH, GA 31302



ABOUT THE PROPERTY

10 acres in Bloomingdale: Prime location for development

This property is a tremendous opportunity for a commercial development project. The total parcel includes 10 acres. It benefits from its convenient location in Savannah and its adjacent to industrial complexes. It is surrounded by a myriad of development types – situated in a primarily residential area but also adjacent to multiple industrial complexes. Conveniently located near Nine Line (9 minutes) and Mitsubishi Power Americas (20 minutes). Easy access to major highways (I-16, I-95, Jimmy Deloach Pkwy) and nearby amenities including shopping, dining, a community park, boat ramps, and hospitals. Currently zoned residential, but has potential to be rezoned and used for commercial use.



HIGHLIGHTS

💰 \$1,200,000.00

📏 10 ACRES LOT

🏠 UNIMPROVED LAND

🅑 DETACHED

📍 ZONING: R-A

✈️ 26 MIN TO AIRPORT

🚶 TOTAL POPULATION:
8,084

SEABOLT
REAL ESTATE

V
VANTOSH
COMMERCIAL GROUP

ON THE MAP



28 MIN TO GEORGIA PORTS AUTHORITY



15 MIN TO HYUNDAI MOTOR GROUP'S ELECTRIC VEHICLE PLANT



26 MIN TO AIRPORT



20 MIN TO MITSUBISHI POWER AMERICAS



10 MIN TO 95



9 MIN TO NINE LINE



10 MIN TO I 16



29 MIN TO DOWNTOWN SAVANNAH



17 MIN TO POOLER

PLEASE INQUIRE

Beth Vantosh

Commercial President



CELL: 912.663.3392



BVANTOSH@VANTOSHCO.COM

****Disclaimer**** This document is provided by Vantosh Commercial Group for informational purposes only and does not constitute professional advice. While we strive to ensure accuracy, we cannot guarantee the completeness or reliability of the information presented. All interested parties should conduct their own due diligence and seek professional advice as needed. Vantosh Commercial Group disclaims all liability for any errors, omissions, or inaccuracies in this document. ©2024 Vantosh Commercial Group. All Rights Reserved.



SEABOLTREALESTATE.COM



OFFICE: 912-233-6609



**24 E. OGLETHORPE AVENUE
SAVANNAH, GA 31401**

SEABOLT
REAL ESTATE


VANTOSH
COMMERCIAL GROUP